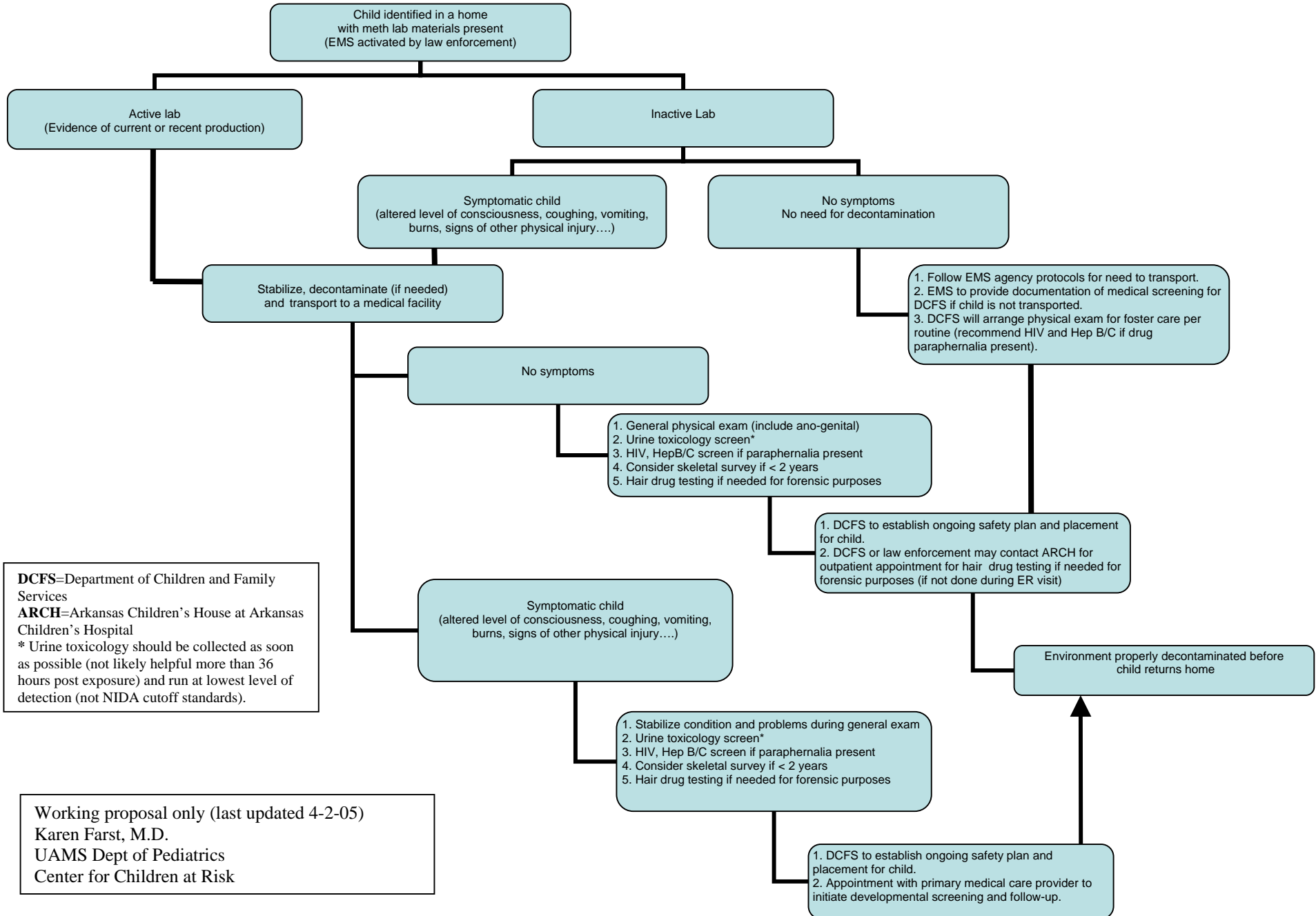


# Children in clandestine meth-labs in Arkansas



DCFS=Department of Children and Family Services  
 ARCH=Arkansas Children's House at Arkansas Children's Hospital  
 \* Urine toxicology should be collected as soon as possible (not likely helpful more than 36 hours post exposure) and run at lowest level of detection (not NIDA cutoff standards).

Working proposal only (last updated 4-2-05)  
 Karen Farst, M.D.  
 UAMS Dept of Pediatrics  
 Center for Children at Risk