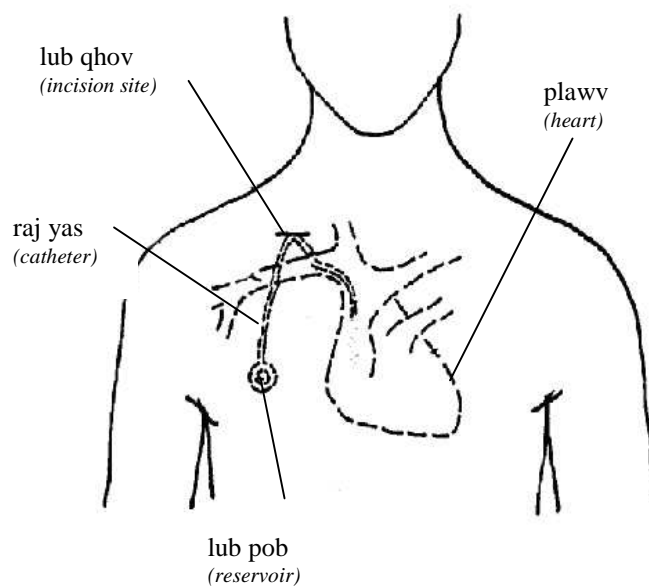


Cog pob hlau: **Kev tu hauv tsev** (Hmong)

Dab tsi yog ib qho cog pob hlau?

Ib qho cog pob hlau yog muab lub pob hlau tso rau hauv qab daim tawv nqaij, ib txwm tso rau saum qaum hauv siab, mus rau txoj hlab ntshav dub. Lub pob no ua yooj yim rau kev tso tshuaj raws leeg los yog tso dej thiab nqus ntshav mus kuaj.

Qhov kev cog no muaj 2 ntus: txoj raj yas thiab lub pob hlau. Txoj raj yas no yog ib txoj yas ntev, khoob hauv plawv muab tso rau txoj leeg ntshav dub mus rau ntawm lub plawv. Lub pob reservoir yog qhov uas yuav siv (ib rab koob nkaug rau) rau kev kho mob. Ib txhia implanted ports muaj ob txoj catheters thiab ob lub reservoirs, li ntawd thiab tso tau ob yam tshuaj thiab dej mus ua ke tib zaug.



Implanted port: **Care at home** (English)

What is an implanted port?

An implanted port is a device placed under the skin, usually on the upper chest, for accessing a vein. The port makes it easier to give IV medicines or fluids and take blood samples.

The implanted port has 2 parts: the catheter and the reservoir. The catheter is a long, hollow tube placed into a large vein leading to the heart. The reservoir is the part that is accessed (a needle is put into it) for treatments. Some implanted ports have two catheters and two reservoirs, so two medicines or fluids can be given at the same time.

Kuv yuav npaj kuv tus me nyuam li cas?

Siv tej lus yooj yim los mus piav rau tias vim li cas thiab yuav tsum muaj lub pob hlau thiab xav tau yam dab tsi. Qhia tau lub ntsiab ntau npaum li cas nws nyob ntawm tus me nyuam lub hnuv nyoog, thiab kev ntxhov siab npaum li cas txog qhov yuav cog lub pob hlau. Yog koj xav tau kev pab, nug tus neeg tu mob los sis tus ua hauj lwm rau me nyuam lub neej.

How should I prepare my child?

Use simple words to explain why the port is needed and what to expect. How much detail you give will depend on the age of your child, and the degree of anxiety about the procedure. If you need help, ask a nurse or Child Life staff member.

Piav tej kev yuav ua ua ntej lawv yuav ua kom tiav rau, tseem ceeb yam koj tus me nyuam yuav pom, hnov ntawm pob ntseg, thiab xuas tau. Qhia koj tus me nyuam yam yuav tshwm sim tom ntej, xws li, “Koj txoj hauj lwm yog nyob twj ywm thaum kuv lo daim ntaub nplaum.” Qhov no yuav pab ua kom kev tu hauv tsev yooj yim rau neb ob leeg.

Lub pob yuav muab tso rau li cas?

Sij hawm thaum phais, tus kws phais tsij lub hau raj yas mus raws qab tawv nqaij ntawm hauv siab thiab nkag kis mus rau txoj leeg ntshav dub, leeg ntshav dub loj mus rau hauv lub plawv. Lub pob hlau muab cog rau hauv qab tawv nqaij.

Yuav muaj ob kab hlais rau ntawm hauv siab tom qab phais, ib kab yog qhov ntawm txoj raj yas tsij mus rau txoj leeg, thiab ib kab yog ntawm lub pob hlau cog rau hauv qab tawv nqaij. Nws yuav muaj ib lub pob su nyob hauv qab tawv nqaij ntawm qhov lub pob cog rau. Koj tus me nyuam yuav hnov mob los yog xeeb txob ntawm kab phais. Yuav muab tshuaj zoo mob rau noj raws li qhov tsim nyog muab.

Kuv yuav tsum tu kuv tus menyuam li cas?

Tu ib tug me nyuam muaj lub pob hlau cog rau yuav ua rau ib nyuag rhiab me ntsis thaum xub thawj. Tus neeg tu mob yuav tu lub pob hlau thiab muaj tshuaj thaum koj tus menyuam tseem nyob hauv tsev khomob.

Raws li koj tus menyuam zoo zuj zus thiab mus nyob tau hauv tsev, lawv yuav qhia koj txog kev yaug lub pob hlau kom tiv thaiv ntshav txhob khov thiab nws txhob txhaws. Yog nws txhaws, yuav raug muab nws tshem tawm.

Qhov kev yuav yaug heev npaum li cas nws nyob ntawm seb nqus ntshav los heev npaum li cas.

Explain procedures before they are done, especially what your child will see, hear, and feel. Tell your child what is expected ahead of time, such as, “Your job is to hold still while I put on the tape.” This will help make care at home easier for both of you.

How is the port put in?

During surgery, the surgeon inserts the tip of the catheter under the chest skin and tunnels it into the superior vena cava, a large vein that goes to the heart. The reservoir is placed under the skin.

There will be two small incisions on the chest after surgery, one where the catheter was inserted into the vein, and one where the reservoir was placed under the skin. There will be a quarter-sized bump under the skin where the implanted port is. Your child may have soreness or discomfort at the incision sites. Pain medicine will be given as needed.

How should I care for my child?

Caring for a child with an implanted port may be a little scary at first. The nurses will take care of the port and give the medicines while your child is in the hospital.

As your child improves and is able to be at home, you will be taught how to flush the port to help prevent blood from clotting and blocking it. If it becomes blocked, it may have to be removed.

How often the port needs to be flushed depends on whether a constant infusion is being given.

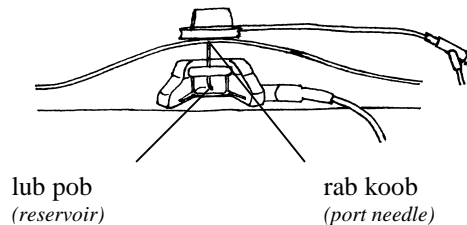
Koj tus menyuav tsum tau yaug lub port *(Your child needs the port flushed):*

- ib hlis ib zaug *(once a month)*
- txhua txhua hnuv *(every day)*
- tom qab txhab ntshav *(after infusions)*

Koj los kuj yuav raug qhia txog kev muab tshuaj thiab muab dej. Cov neeg tu mob hauv tsev yuav qhia koj thiab pab koj kom swm rau tej kev no ua ntej koj ua koj tus kheej.

You may also be taught how to give medicines or fluids. Home care nurses will teach you and help you become comfortable with the procedures before you do them yourself.

Siv cov koob non-coring rau lub pob hlau xwb. Cov koob txawv no yuav tsis ua kom muaj ib lub qhov rau ntawm lub pob hlau (saib duab hauv qab).



Only non-coring needles should be used with the implanted port. These are special needles that do not leave a hole in the reservoir of the port.

Qhov no yuav cia tau lub pob chob koob ntau ntau zaus yam tsis muaj paim kua los. Koj lub chawv muab cov khoom tso ntshav no yuav muab cov koob no rau koj.

This allows the port to be accessed many times without damage. Your home infusion company will provide these special needles.

Kev tseem ceeb cim tseg txog cov raj nqus

Important notes about syringes

Koj yuav tsum siv raj nqus yog 10 ml los sis loj dua. Cov raj nqus me yuav nyem cua muaj zog heev mus rau txoj raj yas thiab yuav ua rau tawg taus.

You must use 10-ml or larger syringes. A smaller syringe may push too much pressure into the catheter and cause it to burst.

Cov raj nqus tshuaj tau muaj npuas cua nyob hauv lawm. Ua ntej yuav siv, nyem txau cov npuas cua tawm tso.

Filled syringes have an air bubble in them. Before using, squirt the air bubble out.

Txhua txhua zaus koj yaug lub pob hlau nrog rau dej kua ntsev los yog cov dej yaug heparin, siv hom “nyem-thiab-so ib pliag” no: nyem ib qho dej me me mus, ces so li 1 rau 2 seconds, ces nyem ib qho me me ntxiv, ces so, thiab ua li ntawd mus ntxiv. Hom no nws yaug ntxuav hauv txoj raj yas. Koj tus neeg tu mob hauv tsev yuav qhia rau koj siv nws.

Every time you flush the port with normal saline or heparin, use the “push-and-pause” method: push a little solution, then pause for 1 to 2 seconds, then push a little more, pause, and so on. This method cleans the inside of the catheter. Your home care nurse will show you how to do it.

Pleev tshuaj loog rau

Yog koj yuav siv cov tshuaj loog (xws li EMLA® or ELA-Max®) kom txhob mob qhov chob koob, pleev rau 1 txog 4 teev ua ntej chob koob rau lub pob. Ua raws li qhov kev qhia uas muab nrog cov tsheej pleev. Nrhiav thaj chaw pleev cov tshuaj, xuas ntiv tes xuas ntawm lub ntug pob hlau. Koj kuj yuav nrhiav tau daim ntaws qhia “Anesthetic cream” los pab tau ib yam thiab.

Tiv thaiv kab mob

Nws tseem ceeb heev txog kev tiv thaiv kab mob, uas muaj ib qho kab mob lawm yuav tsum raug tshem lub pob hlau. Ib tug neeg tu mob yuav qhia rau koj kom paub txuag koj tej khoom siv txhob kis kab mob, li ntawd thiaj tsis muaj kab mob nkag txeem mus rau txoj raj yas loj thiab ua ib qho voos ua mob.

Tu kom huv yog ib qho yuav tsum tau ua!

Ua ntej ua ib yam dab tsi hauv daim ntawv kawm no, ua raws li cov nqe lus nov:

1. Npaj ib thaj chaw huv uas yog ua plag tawv tawv nrog rau siv cov tshuaj (xws li Lysol® los yog lwm hom npe) thiab muab ib txoj phuav huv los pua rau saum toj.
2. Ntxuav koj ob txhais tes kom huv, siv ib hom li nram qab no:
 - Siv cawv cuaj caum ntxuav tes (Purell® los yog lwm yam) raws li kev qhia.
 - Yog tias tes tsis huv los yog tsis muaj cawv cuaj cawm nyob txawm peem, ntxuav koj ob txhais tes nrog rau xab npum tua kab mob **kom ntev li 15 seconds**, txhuam mus los nrawm nrawm, nrog rau hauv cov qab rau tes. Siv ntaub so tes los yog phuam so tes huv los so koj ob txhais tes kom qhuav, thiab siv txoj phuam mus kaw tus kais dej.

Applying anesthetic cream

If you are going to use anesthetic cream (such as EMLA® or ELA-Max®) to reduce the discomfort of the needle, apply it 1 to 4 hours before accessing the port. Follow the instructions that come with the cream, or see the education sheet, “Anesthetic cream”. To find the area to apply it, feel for the edges of the port with your fingers.

Preventing infection

It is very important to prevent infection, which might require removal of the port. The nurse will show you how to keep your supplies sterile, so no germs can enter the line and cause an infection.

Cleanliness is a must! Each time you give a medicine or flush the port, follow these steps:

1. Prepare a clean work area by cleaning a solid surface with household cleanser (such as Lysol® or another brand) and laying a clean towel on it.
2. Clean your hands well, using one of the following methods:
 - Use an alcohol hand sanitizer (Purell® or another brand) according to directions.
 - If hands are dirty or alcohol is not available, wash your hands for **at least 15 seconds** with antibacterial soap, rubbing all surfaces briskly, including under fingernails. Use a paper towel or clean hand towel to dry your hands, and then use the towel to turn off the faucet.

3. Ua ntej **ib zaug twg** koj yaug los yog tso tej yam tshuaj mus rau txoj hlua IV, txhuam lub hau txau tshuaj kom ntev li 30 seconds nrog rau ib daim ntaub chlorhexidine, siv qhov sib zog txhuam. Cia kom nws qhuav. Tsis txhob tso kiv cua tshuab los yog xuas qhov ncauj tshuab.

Nkaug koob mus rau lub pob hlau

1. Npaj thaj chaw ua hauj lwm (saib nplooj ntawv 4).
2. Ntxuav koj ob txhais tes (saib nplooj ntawv 4).
3. Muab cov khoom los ua ke:
 - chlorhexidine sepps los yog lub raj ntsaws rau
 - cov ntaub so chlorhexidine
 - raj dej yaug heparin (1)
 - lub hau kawv
 - cov dej tso raws IV los yog tshuaj
 - rab koob nkaug lub pob hlau nrog txoj raj yas, hom _____
 - raj dej kua ntsev (2)
 - lub thoob rau khoom ntse rau koob:
 - ib lub thoob ib cag rau qhov nov
 - ib lub taub yas tawv tawv (xws li cov taub bleach los yog detergent) nrog rau muaj tus ntsia rau lub hau. Sau ntawv lo rau, “Do Not Recycle – Household Sharps.” Txhob muab koj mus zom dua - Khoom koob ntse hauv tsev xws li koob txhaj tshuaj.

daim ntaub nplaum lo pom kev, yog hais tias koj yuav cia rab koob ntsia rau ntawm lub pob hlau

4. Xyuas cov ntawv lo ntawm cov raj dej qab ntsev thiab cov raj dej yaug, thiab lwm yam tshuaj los yog dej ub no ua ntej muab rau. Xyuas kom meej tias hom tshuaj yog thiab cov dej yaug los tus kuab tshuaj yeej yog lawm.

3. Before **each time** you flush or put any medicine into the IV tubing, scrub the injection cap for 30 seconds with a fresh chlorhexidine wipe, using friction. Let it dry. Do not fan or blow on it.

Accessing the port

1. Prepare the work surface (see page 4)
2. Clean your hands (see page 4)
3. Gather supplies:
 - chlorhexidine sepps or applicator
 - chlorhexidine wipes
 - heparin syringe (1)
 - injection cap
 - IV solution or medicine
 - non-coring port needle with tubing, size _____
 - normal saline syringes (2)
 - sharps container for needles:
 - a special container for this purpose
 - a hard plastic bottle (such as bleach or detergent) with a screw-on lid. Label it, “Do Not Recycle – Household Sharps.”

transparent dressing, if you will leave the port needle in place

4. Check the labels of the normal saline and heparin syringes, and any other medicines or fluids before giving them. Make sure they are the right medicines and the heparin is in the right strength.

- Ib yam tshuaj twg nws zoo mus txog ntua hnuv nws dua caij. Muab nws pov tseg ua ntej yog hais tias koj pom muaj txo nyob hauv los yog koj ua xyem xyav zoo li nws tsis huv lawm.
- Yog koj tsis muaj cov raj tshuaj ntim tau cia ua ntej, nqus rau kom txog qhov txaus yog rau ib cov raj nqus tshiab. (Saib daim ntawv qhia nplooj, “IV medicines: Preparing at home”)

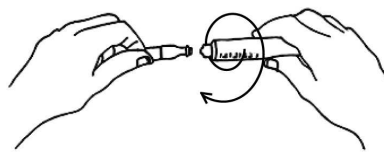
- A medicine is good until the expiration date. Throw it away sooner if you see sediment in it or if you question its cleanliness.
- If you don’t have pre-filled syringes, draw up the correct amount into separate syringes. (See the education sheet, “IV medicines: Preparing at home”.)

Npaj rab koob thiab txoj yas rau lub pob hlau

1. Tso cov pob khoom sib raws nraim li qhov siv ntawm thaj chaw. Qhib cov pob khoom, tsis txhob kov ib yam dab tsi sab hauv nruab nrog li.
2. Muab lub hau txuas txhaj tshuaj, txuas ntu ua them ntswj rau ntawd kom huv – tsis txhob cia chwv dab tsi li. Ntswj lub hau txuas mus rau tog kawg ntawm txoj hlau pob hlau.
3. Xuas cov ntaub chlorhexidine txhuam lub hau txuas txhaj tshuaj thiab cia kom qhuav.
4. Hle lub hau kaw ntawm lub raj dej yang kua ntsev taw.
5. Ntswj lub hau raj nqus tshuaj mus rau hauv lub hau txuas txhaj tshuaj.

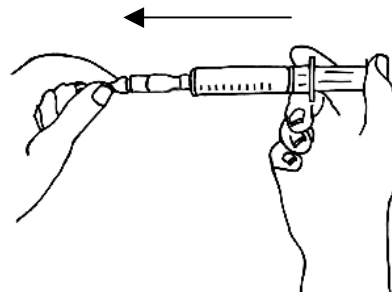
Prepare the port needle and tubing

1. Put packages in order of use on the work surface. Open the packages, without touching anything inside.
2. Pick up the injection cap, keeping the threaded end sterile -- do not let it touch anything. Screw the cap into the end of the port needle tubing.
3. Scrub the injection cap with a chlorhexidine wipe and let it dry.
4. Remove the tip cover from a normal saline syringe.



5. Twist the syringe tip into the injection cap.

6. Txau cov dej yang mus rau txoj yas kawg ntawm lub pob hlau kom txog thaum pom ib teev dej tshwm.



6. Flush the solution through the tubing to the end of the port needle until a drop appears.

7. Nyem lub pob tom txoj raj yas rau.
8. Cia tus raj nqus nyob twj ywm ntawm lub hau txau txhaj tshuaj.

Ntxuav ncig lub pob hlau

1. So cov tshuaj loog, yog tias muaj, nrog rau cov ntaub huv huv.
2. Npaj cov sepps los yog lub applicator:
 - Yog koj siv ib lub sepps, muab nws tuav rau hauv nruab nrab koj tus ntiv xoo thiab cov ntiv me. Maj mam nyem lub sepps kom nws tawg thiab cov dej nrog mus rau qhov paj rwb. Tsis txhob kov qhov paj rwb.
 - Yog koj siv lub applicator, ntxiab ob tug tis ntawm lub applicator. Lub ampule nyob sab hauv nruab nrog yuav tawg thiab tso cov dej tawm. Yog ua kom ntub daim paj thoob huab yuav tau nias mus tim rau hauv nruab nrog hauv ntau ntau zaus.
3. Txhuam thaj tsam ntawd nrog rau ib daim chlorhexidine sepps los yog applicator kom ntev li 30 seconds, siv qhov sib zog txhuam mus txhuam los: nce toj nqis hav, ib sab rau ib sab, thiab txiav ntsim nce toj tsem tsawv.
4. Cia kom nws qhuav qhuav heev tso (ntev li 30 seconds). Tsis txhob tshuab los yog xuas kiv cua tshuab ntawm thaj tsam ntawd li.

Nkaug koob mus rau lub pob hlau

1. Xuas ib sab tes tuav lub pob nkaug koob. Tshem lub hau kaw rab koob.
2. Muab koj cov ntiv tes ntawm lwm sab tes tuav sab ntug kawg ntawm lub pob tuav kom nyob ruaj. Ua zoo tsis txhob chwv thaj chaw ntawm qhov yuav hno rab koob mus rau lub pob hlau.

7. Clamp the tubing.
8. Leave the syringe in the injection cap.

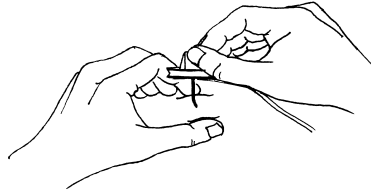
Clean the port site

1. Wipe off the anesthetic cream, if used, with a clean cloth.
2. Prepare the sepps or applicator:
 - If you are using a sepps, hold it between your thumb and fingers. Firmly squeeze the sepps until it cracks and solution flows into cotton applicator. Do not touch the cotton.
 - If you are using an applicator, pinch the wings on the applicator. The ampule inside will break and release the solution. Wet the sponge by pressing it against the inside of the package several times.
3. Scrub the site with one chlorhexidine sepps or applicator for 30 seconds, using friction in a back and forth pattern: up and down, sideways, and diagonally.
4. Let it dry completely (about 30 seconds). Do not blow on or fan the area.

Access the port

1. Hold the port needle in one hand. Remove the needle cover.
2. Put the fingers of your other hand on the outer edges of the port to hold it steady. Be careful not to touch the area where the needle will go into the port.

3. Tuav rab koob li 90-degree ntseg ntseg, tsom ncaj nraim mus rau nruab nrab lub pob hlau, thiab nias rab koob muag nyoos rau hauv tawv nqaij thiab lub pob hlau kom txog thaum mus chwv kiag hauv qab hauv lub qhov khoob.



3. Hold the needle at a 90-degree angle, aim for the center of the port, and push the needle firmly through the skin and the port until it touches the bottom of the port chamber.

4. Tshem tus tes ntawm rab koob thiab muab pov tseg.

4. Remove the handle from the needle and throw it away.

5. Txo lub pob nyem txoj raj yas.

5. Unclamp the tubing.

6. Rub tus kav nqus hauv tus syringe rov qab los kom pom tias muaj ntshav tawm rov los ua ntej txau cov tshuaj los yog cov dej mus rau hauv.

6. Pull back on the syringe plunger to make sure you get a blood return before injecting any medicines or fluids.

- Yog tias muaj ntshav tawm rov los, yang cov dej kua ntsev mus rau. Kav tsij ua raws li qhov koj npaj ua.
- Yog tsis muaj ntshav tawm rov los, thiab koj xav tias koj hno ncaj qhov chaw lawm, maj mam yang cov dej kua ntsev mus rau li 2 los 3 ml. Yog tias koj yang tau dej mus rau yooj yim heev, rub tus kav nqus rov qab dua seb puav muaj ntshav tawm los. Yog tias tseem tsis pom ntshav tawm los thiab, tso tseg. Hu rau tus neeg tu mob hauv tsev.

- **If there is a blood return**, flush with the saline. Continue with your planned procedure.
- **If there is no blood return**, and you think you are in the right place, gently try to flush with 2 or 3 ml of saline. If you are able to flush easily, pull back on the syringe plunger again to see if there is a blood return. If there is still no blood return, stop. Call the home care nurse.

Muab tshuaj rau thiab yang lub pob hlau

1. Yog koj tsis muab tshuaj rau thaum sij hawm no, ces mus rau nqe 6.
2. Yog koj muab tshuaj rau, muab txuas rau thiab muab tshuaj rau raws li tej kev qhia los ntawm koj tej neeg tu mob hauv tsev. Yog koj tso tshuaj raws dej los mus rau, mus saib ntawm qhov “Cia rab koob nyob twj ywm rau qhov yuav tso dej mus rau”, hauv qab).

Giving medicines and flushing the implanted port

1. If you are not giving medicines at this time, go to step 6.
2. If you are giving medicines, connect and give it as instructed by your home care nurse. If you are giving an infusion, go to “Leaving the needle in place for an infusion”, below).

3. Tom qab hno tshuaj los yog tso tshuaj raws dej, muab rab koob rho tawm ntawm lub hau txuas nyob ntawm lub pob hlau.
4. Txuam lub hau txua nrog rau ib daim ntaub chlorhexidine thiab cia kom nws qhuav.
5. Yaug lub pob hlau nrog rau cov dej kua ntsev, siv hom thawb mus-thiab-so ib pliag. Rho tus raj nqus tawm.
6. Ntxuav lub hau kaw qhov chob koob nrog rau ib daim ntaub chlorhexidine thiab cia kom nws qhuav.
7. Yaug lub pob hlau nrog rau cov dej heparin, siv hom thawb mus-thiab-so ib pliag. Rho tus raj nqus tawm.
8. Khawm txoj hlua IV rau.

Kev qhia tsuag tsuag:

1. Yaug nrog dej qab ntsev.
2. Muab tshuaj los yog dej.
3. Yaug nrog dej qab ntsev.
4. Yaug nrog cov dej heparin.

Tshem rab koob tawm

1. Xuas ib sab tes tuav lub pob hlau kom nyob twj ywj.
2. Lwm sab tes, tuav lub pob chob koob, thiab muab ib tug ntiv tes tso rau saum lub hau tus tes tuav kom ruaj.
3. Tsa tus tes tswj ncaj nraim rov qab kom txog thaum nws tom kiag rau lawm tso. Qhov nov tshem rab koob tawm ntawm lub pob thiab lub hau khwb ntawm rab koob.
4. Yog los ntshav, xuas ntaub rwb huv huv los nias rau kom txog thaum ntshav tu.
5. Muab ntaub nplaum lo rau yog tias tsim nyog.

3. After giving the medicine or infusion, disconnect it from the injection cap on the port needle.
4. Scrub the injection cap with a chlorhexidine wipe and let it dry.
5. Flush the port with normal saline, using the push-and-pause method. Remove the syringe.
6. Scrub the injection cap with a chlorhexidine wipe and let it dry.
7. Flush the port with heparin, using the push-and-pause method. Remove the syringe.
8. Clamp the IV tubing.

Quick reference:

1. Flush with normal saline.
2. Give the medicine or fluid.
3. Flush with normal saline.
4. Flush with heparin.

Removing the needle

1. Hold the port steady with the fingers of one hand.
2. With your other hand, hold the port needle, and put one finger on the tip of the safety arm.
3. Lift the safety arm straight back until it clicks. This removes the needle from the port and covers the tip of the needle.
4. If bleeding occurs, apply pressure with sterile gauze until it stops.
5. Apply a bandage if needed.

Cia rab koob nyob twj ywj rau qhov tso dej

1. Tom qab hno koob tas rau lub pob thiab yaug dej kua ntsev lawm, tshem tus raj nqus dej kua ntsev.
2. Ua raws li tej kev qhia tso tshuaj IV uas tau qhia los ntawm koj tus neeg tu mob hauv tsev.
3. Muab ib daim ntaub ci pom kev los qhvw rab koob thiab txoj hlua raj yas.
4. Koj tus me nyuam da tau dej ntxhuav los yog hauv dab dej ntiav ntiav, yog tias koj muab ntaub yas thiab cov ntaub nplaum tsis txeeem dej los mus lo raws ntug ntawm lub qhov nqaij. Yog tias daim ntaub nplaum los yog ci pom kev ntawd ntub lawm, muab daim tshiab los hloov kiag tom sis. Tsis txhob cia txoj raj yas IV no mus rau hauv dab dej, ib tsam kab mob nyob hauv dab dej ntxeeem mus rau hauv txoj raj yas loj.
5. Hloov rab koob ntawm lub pob hlaub 7 hnuv ib zaug.

Ntsaig khoom

Muab tus koob thiab txoj raj yas pov rau hauv lub thoob rau koob. Pov tus raj nqus rau hauv thoob rau khib nyiab, tsuav tsis yog hais tias muaj ntshav nyob hauv. Yog hais tias lawv lo ntshav thiab, pov rau lub thoob rau koob.

Tsis txhob ntim puv puv rau lub thoob rau koob. Kev xa khoom pov tseg sib txawv nyob rau ntawm thaj chaw koj nyob. Qee thaj tsam zej zog lawv muaj ib qhov chaw khaws tej khoom ntse ntse. Tshawb xyuas kom paub txog tias koj yuav ua li cas, nug mus rau koj lub chaw sau khib nyiab, chaw muag tshuaj, los yog chaw kuaj mob.

Leaving the needle in place for an infusion

1. After accessing the port and flushing with saline, remove the normal saline syringe.
2. Follow directions for IV infusion provided by your home care nurse.
3. Cover the needle and tubing with a transparent dressing.
4. Your child can shower or bathe in shallow water, if you cover the dressing with plastic and tape all the edges down with waterproof tape. If the tape or transparent dressing becomes wet, replace it right away. **Do not let the IV tubing drop down into the bath water**, as germs from the water may enter the catheter.
5. Change the port needle every 7 days.

Cleaning up

Put the needle and the tubing into the sharps container. Put used syringes into your regular trash, unless blood is in them. If they are soiled with blood, use a sharps container.

Do not overfill the sharps container. Disposal varies depending on the area you live in. Some communities have a household sharps collection program. To find out what you should do, check with your garbage collection company, pharmacy, or clinic.

Leej twg thiab thaum twg thiaj tsim nyog kuv hu rau kev pab?

Hu rau chaw saib xyuas mob hauv tsev yog:

- yaug los yog muab tshuaj rau nyuab nyuab.
- tsis muaj ntshav tawm rov ntawm lub pob hlau los.

Hu rau chaw kuaj mob yog:

- tus kub siab tshaj li 101.5° F (38.6° C)
- liab, o, los kua yig, los sis mob ntawm lub qhov nqaij
- liab, o, los kua yig, los sis mob thaj tsam ntawm lub pob hlau

Lus nug?

Yog koj muaj lus nug ab tsis, thov hu:

Tus neeg tu mob hauv tsev (*Home care nurse*): _____

Lub chaw muab khoom siv (*Supply company*): _____

Lub chaw muab tshuaj rau hauv tsev (*Home care pharmacy*) _____

Kws kho mob (*Doctor*): _____

Who and when should I call for help?

Call home care if:

- difficult to flush or give medicine.
- no blood return from the port.

Call the clinic if:

- temperature higher than 101.5° F (38.6° C)
- redness, swelling, drainage, or pain at the incision site
- redness, swelling, drainage, or pain at the port site

Questions?

If you have any questions, please call:

Children's Hospitals and Clinics of Minnesota
Patient/Family Education
2525 Chicago Avenue South
Minneapolis, MN 55404
2/10 ©Copyright