

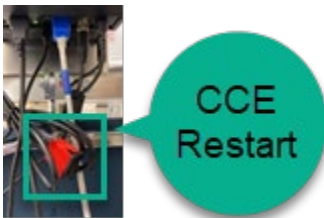
Anesthesia Transport / NORA Guide: Minneapolis

Transport Cart

Plug in the transport cart regularly. Data will not flow from the transport monitor if the CCE is powered off.

CCE

Reboot Transport Cart CCE before each case to improve wireless connectivity.



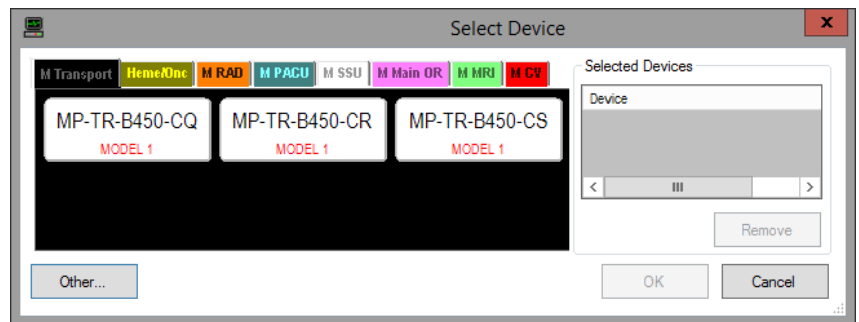
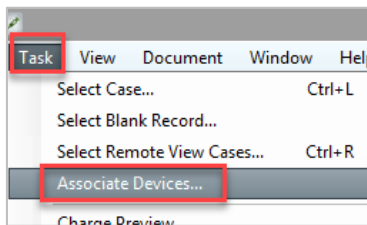
Begin this process while setting up the rest of the room as this process can take up to 5 minutes. Check all connections. Specifically ensure that the USB from the CCE box is connected to the back of the patient monitor (this is often disconnected when the patient monitor is moved off the transport monitor platform in CT and ANW Radiation therapy). Review the [Anesthesia Device Connections Troubleshooting Guide](#).

- Start ALL cases using induction room anesthesia computer following standard workflow.

Monitor Association

When associating to monitors, it will save time to select the gas machine from the induction room and the transport patient monitor. To change the associated monitors:

1. Click **Task** on the toolbar.
2. Click **Associate Devices**.
3. The **Select Device** screen displays and monitors can be added or removed.



Note: If planning to travel with a laptop (e.g. CT scan): turn on laptop, login, and open SaAnesthesia **BEFORE** beginning the case. Do not select patient, but leave laptop open and set aside. This takes up to 5 minutes and will save time later.

Anesthesia Transport / NORA Guide Minneapolis

Macro Selection

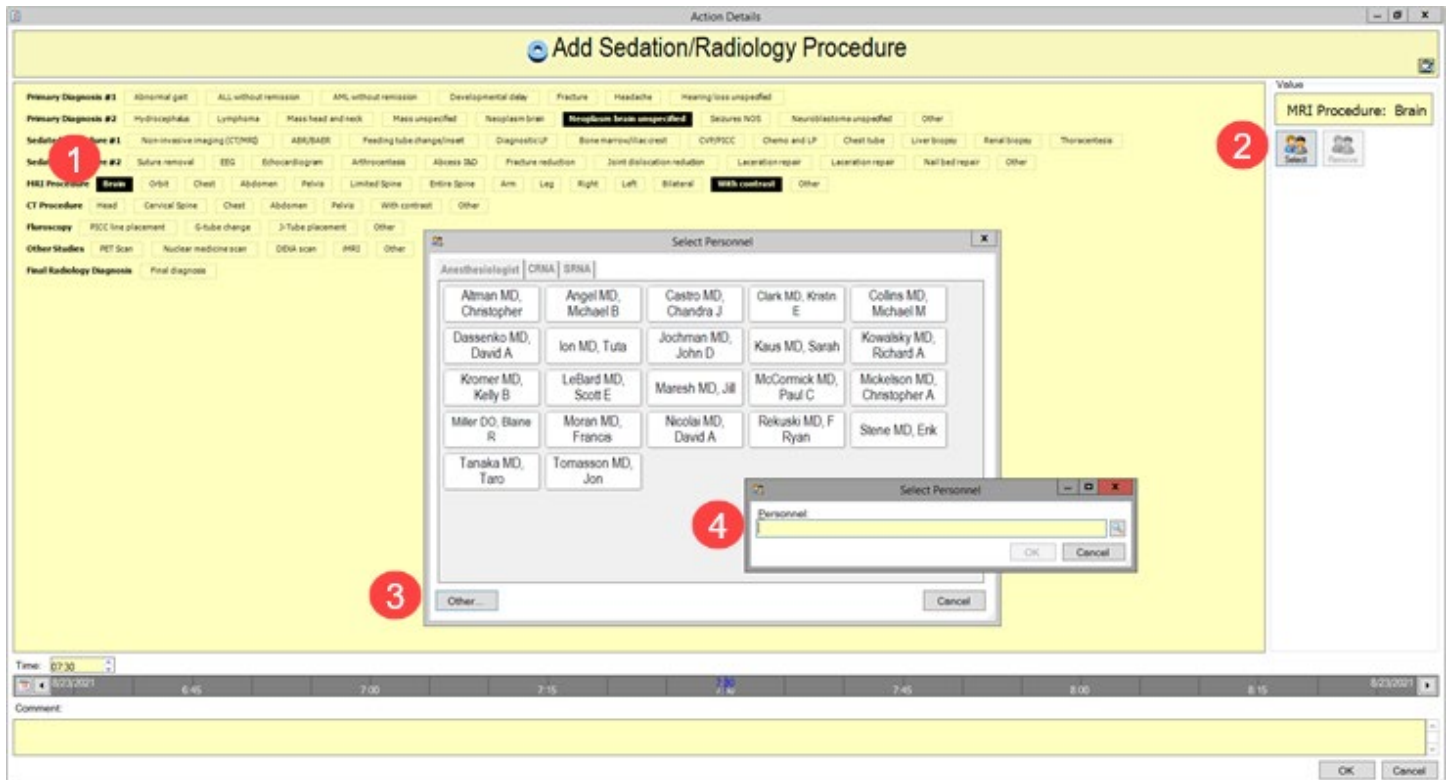
Carefully select the appropriate macro for each case. Additional macros can be added to the record to facilitate specific workflows. Examples:

- **Restore Basic Vital Parameters Macro:** If **Unselect All** was not previously checked on the **Suspend Case** screen before suspending the case, vitals will stop displaying. To restore this connection, click **Macros** on the toolbar and select the **Other** tab. Select the **Restore Basic Vital Parameters** macro.
- **Add On Imaging:** Select this macro on a combination case with an OR component to add the pertinent radiology actions to the To Do list.

Sedation/Radiology Procedure Action

To designate a reading Radiologist or Procedurist to the scan or procedure:

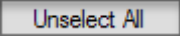
1. Click **Brain** under **MRI Procedure**.
2. Click **Select**.
3. Click **Other**
4. Type in name of the reading Radiologist or Procedurist under **Personnel**.



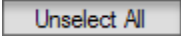
This workflow can also be used with other imaging studies and procedures such as LP or Bone Marrow.

Process Workflows – Minneapolis

MRI

1. At the completion of induction before transport, suspend the case and click **Unselect All** on the **Stop Data** window.
2. Upon arrival in MRI, open patient record and the MRI monitors will auto-associate. To manually document missing vitals, click **Document** on the top toolbar and scroll down to select **Value**. Ensure vital signs charted with no gaps >10min.
3. When departing MRI, suspend and click  on the **Stop Data** window.
4. Upon arrival at PACU, complete PACU workflow and manually document missing vitals as outlined above ensuring no gaps >10min.

Nuc Med

1. At the completion of induction before transport, suspend the case and click **Unselect All** on the **Stop Data** window.
2. Upon arrival in Nuc Med, open patient record on a WOW (workstation on wheels – can use the one located in the MRI 1.5T control room,) and open the record, click **Task** and scroll down to select **Associate Devices**. (The monitors will be labelled RAD M1 – M9). To manually document missing vitals, click **Document** on the top toolbar and scroll down to select **Value**. Ensure vital signs charted with no gaps >10min.
3. When departing Nuc Med, suspend the case and click  on the **Stop Data** window.
4. Upon arrival at PACU, complete PACU workflow and manually document missing vitals as outlined above ensuring no gaps >10min. **Anesthesia Monitor**.

CT

1. Confirm that CCE was rebooted and check connections.
2. Turn on laptop, login, and open SaAnesthesia before beginning case. Leave laptop open and set aside.
3. At the completion of induction before transport, suspend the case and click **Unselect All** on the **Stop Data** window.
4. Open the patient record in SaAnesthesia on a laptop, and associate the transport monitor to the record. Data will continue to flow. Medication and action charting can be continued on the laptop.
 - **Note:** If the laptop locks, log back in as needed
 - If CCE not transmitting vitals, refer to pages 3-7 of [Document an Anesthesia Record](#) to manually enter or recover values.
5. **Return to PACU:** Complete or suspend the case on the laptop.
Return to OR: Suspend and reopen case on the OR computer.

IT Support: Telmediq message Anesthesia Assistance Monday - Friday 7 a.m. – 5 p.m. or call the Children's IT Service Desk at extension 4-5000 after hours to report transport documentation issues to the SurgiNet Anesthesia team.