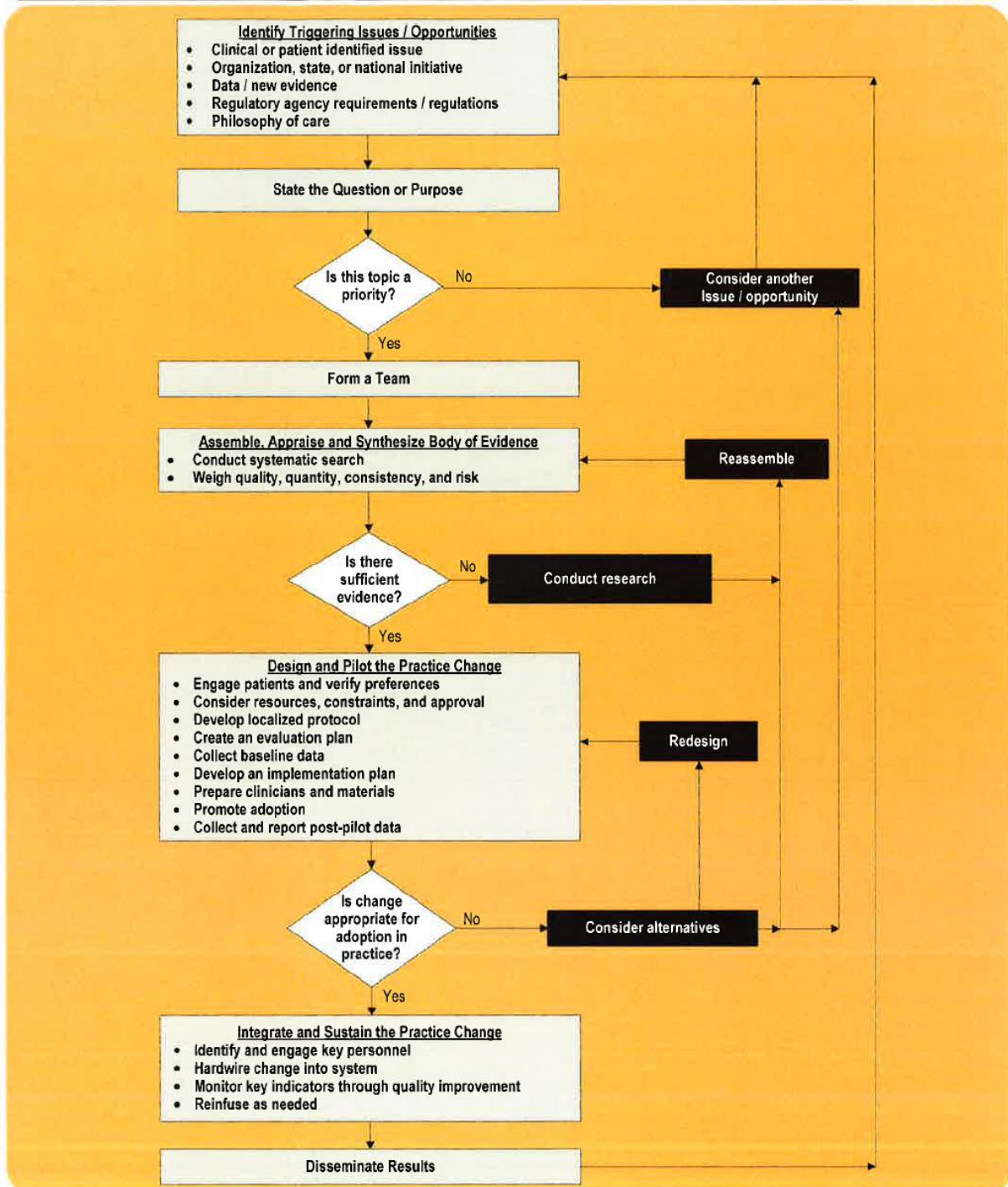


The Iowa Model Revised: Evidence-Based Practice to Promote Excellence in Health Care



◆ = a decision point

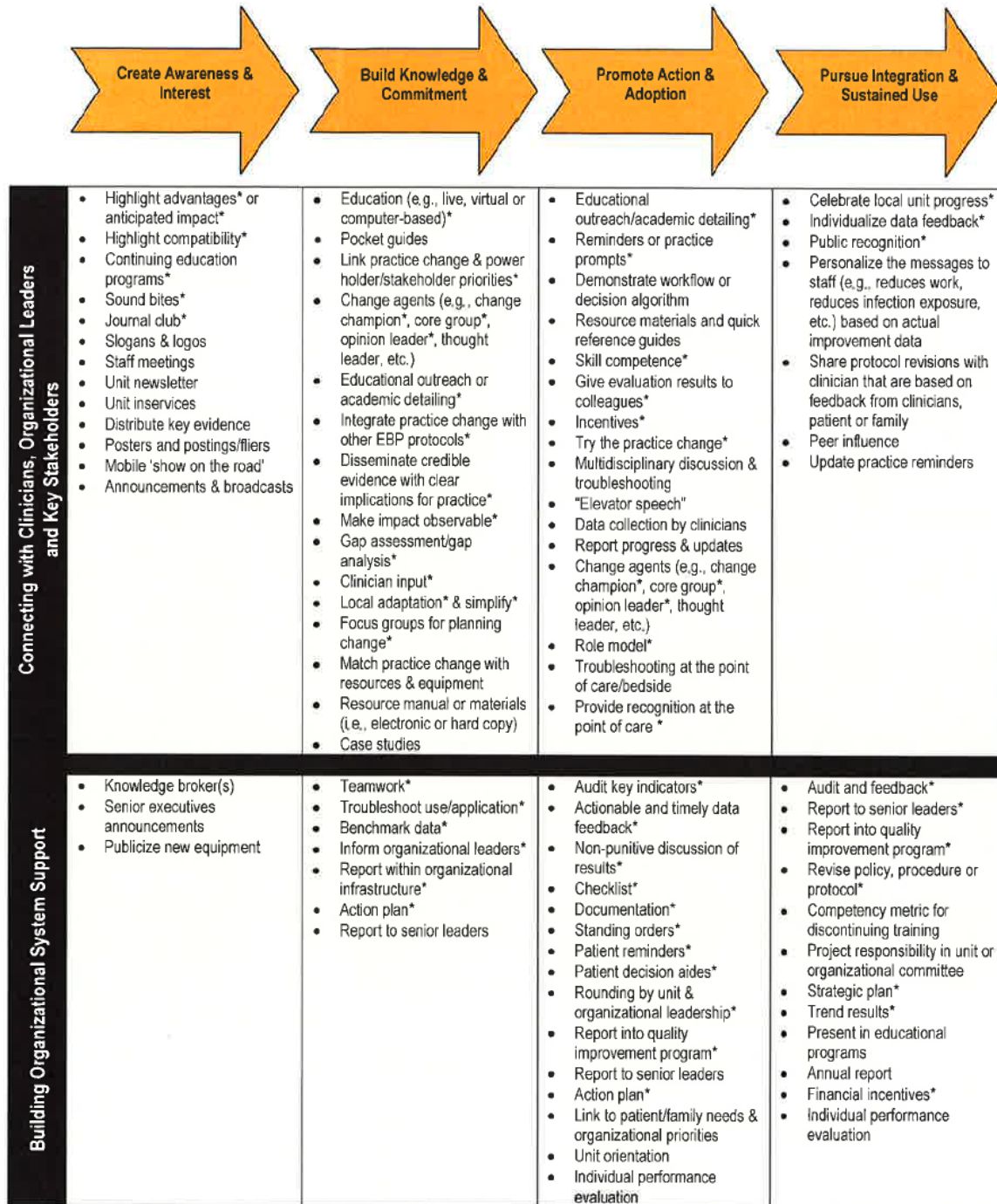
DO NOT REPRODUCE WITHOUT PERMISSION

©University of Iowa Hospitals and Clinics, Revised June 2015

To request permission to use or reproduce, go to

<http://www.uihealthcare.org/nursing-research-and-evidence-based-practice/>

Implementation Strategies for Evidence-Based Practice



* = Implementation strategy is supported by at least some empirical evidence in healthcare

DO NOT REPRODUCE WITHOUT PERMISSION

Requests to:
Department of Nursing
Kimberly-jordan@uiowa.edu
The University of Iowa Hospitals and Clinics
Iowa City, IA 52242-1009

©University of Iowa Hospitals and Clinics / Laura Cullen, MA, RN, FAAN

Used/Reprinted with permission from the University of Iowa Hospitals and Clinics. Copyright 2015. For permission to use or reproduce the model, please contact the University of Iowa Hospitals and Clinics at (319)384-9098.