

CHILDREN'S MINNESOTA NEONATOLOGY

Children's
MINNESOTA
The Kid Experts®



NEONATAL PROGRAM OVERVIEW

Children's Minnesota neonatology program encompasses the largest high-risk neonatal care program in the Upper Midwest. Our fetal intervention program is nationally recognized for exceptional clinical outcomes. We are committed to consistent care across the community, limiting unnecessary variation, identifying and spreading best practices, and rapidly addressing opportunities for improvement.

- The largest high-risk neonatal care program in the region with nearly **200 neonatal beds**. We care for babies born with congenital abnormalities and various critical special needs.
- **A comprehensive care team** including neonatologists, neonatal nurse practitioners, nurses, respiratory therapists, physical therapists, occupational therapists, pharmacists, social workers and music therapists.
- **500+ babies transported** annually by the Neonatal Transport Team. Babies are transported by helicopters, fixed-wing aircraft and specialized critical care ground transportation with in-route capability for full ventilatory and hemodynamic support, body cooling and ECMO.
- **Three Mother Baby Centers** that combine Allina Health's fetal and maternal services with Children's Minnesota neonatal and pediatric specialty care.
- **24/7 NICU coverage** by neonatologists and neonatal nurse practitioners.
- **24/7 neonatal virtual care for regional community hospitals**, a technology that allows critical video consultations during stabilization of newborns.

The largest high-risk neonatal care program in the upper Midwest.

Diagnostic, medical and surgical services provided:

- Cardiovascular evaluation and treatment
- Cardiac surgery for complex cardiac anomalies and ECMO
- Developmental assessment and therapy
- Diagnostic testing
 - Apnea testing
 - At-home apnea monitoring
 - Hearing screenings
 - Infant pulmonary function testing
 - Ophthalmologic and retinal services, including retinopathy screening
- Extra Corporeal Membrane Oxygenation (ECMO)
- Fetal program support
- Dedicated pediatric surgical specialties
- High-risk delivery attendance
- Infant massage and music therapy
- Therapeutic hypothermia for babies with hypoxic-ischemic encephalopathy (HIE)
- Consultative support for high-risk perinatal patients
- Intensive Care Follow-up Clinic
- Neurologic monitoring and care
- Neuro-intensive care program
- Nutritional consultation and care
- PDA transcatheter closure using occlusion devices
- Pediatric anesthesia
- Respiratory support
 - Inhaled nitric oxide therapy
 - Noninvasive, conventional and high-frequency ventilation
- Specialized care and follow up of newborns with neonatal opioid withdrawal syndrome (NOWS)

childrensMN.org/neonatology

MEET THE NEONATOLOGISTS

We think of our team as a family, caring for other families. That means we work closely with referring physicians as well as parents to deliver the best care for babies in need. As one of the largest neonatal teams in the region, we're able to care for the most acutely ill newborns. Our Level IV NICU in Minneapolis and Level III NICUs in St. Paul and Coon Rapids help us provide the best care for fragile babies. We offer 24/7 access to a neonatologist so physicians can consult with our team on urgent needs. And to support families on their journey, we provide child life specialists, dietitians, music therapists, neonatal nurse practitioners, respiratory therapists, social workers, spiritual counselors and more.

Our team partners with the childbirth experts at The Mother Baby Center, a collaboration between Allina Health and Children's Minnesota. The partnership helps us deliver consistent, high-quality care while limiting unnecessary variation and making swift improvements in best practices. Our physician and NNP teams also partner with regional hospitals to provide expertise in other health systems and communities.



Thomas George, MD, FAAP

System Medical Director

Sit Investment Associates Endowed Chair
in Neonatology

Medical Director of Methodist Hospital Special
Care Nursery

Adjunct Professor, University of Minnesota,
Department of Pediatrics

Dr. George has been in practice for more than
25 years and has extensive experience in caring for
critically ill newborns.

Neonatal training: University of Iowa Children's Hospital

Clinical interests: Role of inhaled nitric oxide in
premature infants, educational research, faculty
development and determining trainee competency



Andrea Lampland, MD

Associate System Medical Director

Associate Program Director, University of Minnesota
Neonatal Perinatal Fellowship Program

Assistant Professor, University of Minnesota,
Department of Neonatology

Neonatal training: University of Minnesota

Clinical interests: Clinical and laboratory research of
neonatal ventilation strategies, the care of extremely
preterm infants, neonatal transport and resident/
fellow education



Annica Alwine, MD

Staff neonatologist

Neonatal training: Vanderbilt University Medical
Center

Clinical interests: Lung development, care for
ELBW infants, ECMO



Daniela Villacis Calderon, MD

Staff neonatologist

Neonatal training: University of Minnesota

Clinical interests: Hypoxic-ischemic encephalopathy,
neonatal neurodevelopmental outcomes, global
health strategies, antibiotic stewardship



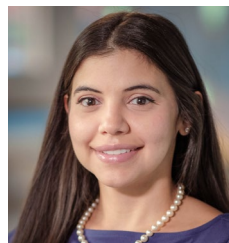
Jennifer Berger, DO

Staff neonatologist

Neonatal training: University of Iowa

Neonatal hemodynamics training: University of Iowa

Clinical interests: Management of extremely premature
infants, necrotizing enterocolitis, global health



Stephania Cavallaro Moronta, MD

Staff neonatologist

Neonatal training: University of Iowa

Neonatal hemodynamics training: University of Iowa

Clinical interests: Physiology surrounding patent
ductus arteriosus, acute pulmonary hypertension
of extreme premature infants and vein of Galen
malformation



Katherine Braski, MD

Staff neonatologist

Neonatal training: University of Utah

Clinical interests: Prevention and treatment of
feeding difficulties, necrotizing enterocolitis in
premature infants; research in Near-Infrared
Spectroscopy



Eric Culp, DO

Staff neonatologist

Neonatal training: Loyola University

Clinical interests: Less-invasive ventilation
strategies, antibiotic stewardship

MEET THE NEONATOLOGISTS, CONTINUED



Ann Downey, MB, BAO, BCh, MS

Director of Neonatal Quality

Neonatal training: University of Colorado, School of Med.; Northwestern Univ., Feinberg School of Medicine

Clinical interests: Health care quality and safety, neonatal resuscitation



Alexandra Muhar, MD

Staff neonatologist

Neonatal training: Vanderbilt University Medical Center

Clinical interests: Improving care and outcomes for opioid exposed infants & their families, education for trainees and outreach for community hospitals

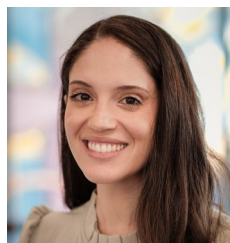


Evangelia (Lia) Gravari, MD

Director, Neonatal ECMO

Neonatal training: University of Louisville

Clinical interests: ECMO and neonatal transport

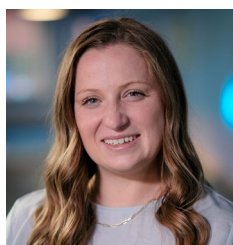


Faith Myers, MD

Staff neonatologist

Neonatal training: Stanford University

Clinical interests: Neonatal resuscitation, simulation and point-of-care ultrasound



Leah Jordan, MD

Staff neonatologist

Neonatal training: University of Minnesota

Clinical interests: Improving lactation care for patients and families through the use of quality improvement and trauma-informed care



Emilee Parsons, DO

Medical Director of Neonatal Transport and Neonatal Virtual Care

Neonatal training: University of Chicago

Clinical interests: Patient safety, simulation and global health



Heidi Kamrath, DO

Neonatal Outpatient Clinic Services Medical Director

Neonatal training: University of Minnesota

Clinical interests: Management of extreme prematurity, intensive care follow-up, quality improvement

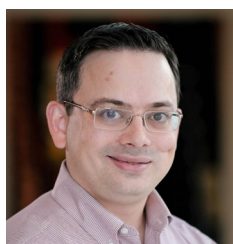


Megan Paulsen, MD

Staff neonatologist

Neonatal training: University of Colorado

Clinical interests: The intersection between the NICU environment and long-term outcomes, optimizing NICU family engagement and leadership development



Christopher Lust, MD

Medical Director, Special Care Nursery, Mercy Level III NICU, Regions Hospital Special Care Nursery and Lakeview Hospital Special Care Nursery

Neonatal training: Washington University in St. Louis

Clinical interest: Neonatal Abstinence Syndrome



Erin Plummer, MD

Staff neonatologist

Neonatal training: University of Minnesota

Clinical interests: Growth, body composition, neurodevelopmental outcomes in neonates requiring surgery



Ryan Meinen, DO

Medical Director of Ridgeview Medical Center NICU, St. Francis Special Care Nursery

Neonatal training: University of Wisconsin-Madison

Clinical interests: Point of care ultrasound (POCUS) use in the NICU, PDA management strategies, ventilation of the neonate and quality improvement



Thomas Pokora, MD

Staff neonatologist

Neonatal training: University of Minnesota

Clinical interests: Neonatal abstinence syndrome, multiples and education

MEET THE NEONATOLOGISTS, CONTINUED



Sara Stucker, MD

Staff neonatologist

Neonatal training: University of Minnesota

Clinical interests: Quality improvement and guideline implementation, optimizing non-invasive respiratory support and improving outcomes for premature infants



Tara Zamora, MD

Medical Director, Minneapolis Level IV NICU

Neonatal training: University of Minnesota

Clinical interests: Extremely preterm infant, blood transfusion practices and neonatal nutrition



Jill Therien, MD

Medical Director, St. Paul Level III NICU

Neonatal training: University of Minnesota

Clinical interests: Quality improvement and clinical research, particularly in extremely low birth weight infants during the first month of life



Elizabeth Petri Zorn, MD

Medical Director, Infant Care Center

Neonatal training: University of Minnesota

Clinical interests: Neurodevelopmental outcomes, hypoxic ischemic encephalopathy, intensive care follow-up



Jameel Winter, MD

Staff neonatologist

Neonatal training: University of Virginia

Clinical interests: Neonatal resuscitation, tele-neonatology and optimizing neonatal care in resource constrained settings around the world

NEONATAL INTENSIVE CARE SETTINGS

MINNEAPOLIS

Children's Minnesota Hospital

2525 Chicago Avenue South

Minneapolis, MN 55404

612-813-6000

Level IV Neonatal Intensive
Care Unit (NICU) • 44 beds

Level II Special Care
Nursery (SCN) • 33 beds

Infant Care Center (ICC) • 41 beds

ST. PAUL

Children's Minnesota Hospital

345 North Smith Avenue

St. Paul, MN 55102

651-220-6000

Level III NICU • 50 beds

Level II SCN • 12 beds

COON RAPIDS

Mercy Hospital

4020 Coon Rapids Blvd NW

Coon Rapids, MN 55433

763-236-8400

Level III NICU • 16 beds

CLINICAL RESOURCES

- Request a speaker through Kid Experts On Demand
- Neonatal case review presentations
- Neonatal virtual care
- Patient family education resources
- Neonatal Stabilization Guide
- Neonatal transport

Visit childrensMN.org/neonatal-resources or contact healthprofessionals@childrensMN.org for more information.

866-755-2121

**CHILDREN'S MINNESOTA
PHYSICIAN ACCESS**

Reach us 24/7 for patient referrals, consults, admissions and neonatal transport.